

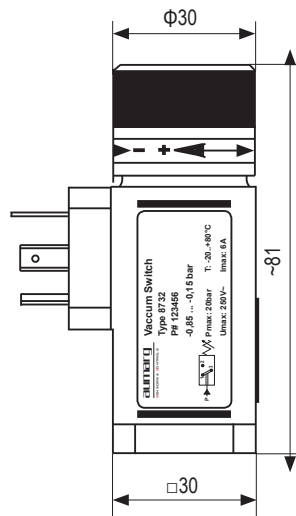


### Vacuum Pressure Switch 真空压力开关

- Adjustment range: -0,85 ... -0,15 bar
- Snap action micro switch
- Elastomer membrane
- Change over contact SPDT
- E-connection: L-Plug or M12 x 1
- Power rating: 250V AC / 4A、24V DC / 4A

- 开关范围：-0,85 ... -0,15 bar
- 速动微动开关
- 弹性体膜片
- 开关类型为单刀双掷
- 电气连接：L-Plug 插头或 M12 × 1
- 额定功率：250V AC / 4A、24V DC / 4A

#### Drawing / 尺寸图

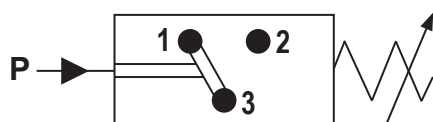


#### Standard types / 标准类型

Series 系列	Adjustment ranges 开关范围	Max. system pressure 最大系统压力	Repeatability 重复性	Max. hysteresis 最大滞后	Measurement element 测量元件	Pressure fitting 过程连接	Material of membrane 膜片材质	Material of housing 本体材质
8732	-0,85...-0,15 bar	20 bar	$\pm 0,05$ bar	250 mbar	Membrane 膜片	G1/4" Flange	NBR NBR-LowTemp. EPDM FVMQ Viton	Zinc plated steel / 镀锌钢 stainless steel / 不锈钢

Technical Specification / 技术规范		
Adjustment range 开关范围	-0,85 ... -0,15	[ bar ]
Repeatability 重复性	± 0,05	[ bar ]
Max. system pressure 最大系统压力	20	[ bar ]
Max. hysteresis 最大滞后	150 ... 250 mbar, not adjustable 150 ... 250 mbar, 不可调	
Switched voltage 开关电压	AC: ~ 250 / DC: ~ 24	[ V ]
max. switched current resistive load 最大开关电阻负载电流	AC: 6 / DC: 4	[ A ]
Mechanical lifetime 机械寿命	> 5 × 10 <sup>6</sup> / cycles	
Switching frequency 开关频率	max. 100 cycles / min 最高 100 次 / 分钟	
Material of housing 本体材质	zinc plated steel / stainless steel 镀锌钢 / 不锈钢	
Material of membrane 膜片材质	NBR / NBR-LowTemp. / EPDM / FVMQ / Viton	
Pressure fitting 过程连接	G1/4" female / horizontal flange	
Tightening torque, recommended 拧紧扭矩, 推荐	20	[ Nm ]
Vibration resistance 抗振动性	10g (10 ... 2000Hz) sinus acc. to ISO 16750-3 10g 符合 ISO 16750-3 在 10 .. 2000 Hz	
Shock resistance 抗冲击性	30g, 14ms shaped sinus acc. to DIN 40046, T7 30g, 14ms 符合 DIN 40046, T7	
Temperature range of medium 介质温度范围	NBR : -20 ... +80 NBR-LowTemp.: -40 ... +80 EPDM: -40 ... +100 FVMQ: -40 ... +100 Viton: 0 ... +100	[ °C ]
Protection degree 防护等级	IP65 using L-Plug / L-Plug 插头为 IP65 IP67 using plug M12x1 / M12 × 1 为 IP67	
Weight 重量	~ 0,3	[ kg ]

## Wiring diagram / 接线图



SPDT / 单刀双掷

# Series 8732 / 8732 系列

Pressure Switch / 压力开关

## Specification key / 规格代码

8732 -  -  -  -  -  -  -

Pressure adjustment range / 压力设置范围	
16	-0,85 ... -0,15 bar

Output signal / 输出信号	
3	SPDT / 单刀双掷

Membrane / 膜片材质		
N	NBR	-20 ... +80°C
L	NBR-LowTemp.	-40 ... +80°C
E	EPDM	-40 ... +100°C
F	FVMQ	-40 ... +100°C
V	Viton	0 ... +100°C

Material of housing / 本体材质	
Z	zinc plated steel / 镀锌钢
S	stainless steel / 不锈钢

Options / 选项	
W	without / 无
XX,XX	Factory preset / 工厂预设开关点 <sup>1)</sup>

<sup>1)</sup> set point adjustment increasing or decreasing.  
<sup>1)</sup> 设置开关点为上升或下降压力。

E-connection / 电气连接	
51	L-Plug EN 175301-803-A / L-Plug 插头
64	M12 x 1 / 圆形 M12 x 1

Pressure fitting / 过程连接	
62	G1/4" female
42	horizontal flange

### Sample:

**8732-16-3-N-Z-62-51- -0,6F**

Vacuum Pressure Switch

Type: 8712

Adjustment range: -0,85 ... -0,15 bar

Output signal: SPDT

Membrane: NBR

Material of housing: zinc plated steel

Pressure fitting: G1/4" female

E-connection: L-Plug acc. to DIN EN 175301-803

Option: Factory preset switch SP= -0,6 bar falling

### 举例:

**8732-16-3-N-Z-62-51- -0,6F**

真空压力开关

型号: 8712

压力设置范围: -0,85 ... -0,15 bar

输出信号: SPDT

膜片材质: NBR

本体材质: 镀锌钢

压力接头: G1/4" 内螺纹

电气连接: L-Plug 插头

选项: 工厂预设开关, 开关点 = -0,6 bar 下降