

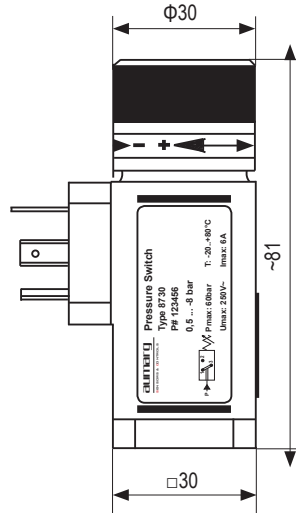


Membrane Pressure Switch 膜片压力开关

- Adjustment range: 0,2 ... 16 bar
- Snap action micro switch
- Elastomer membrane
- Change over contact SPDT
- E-connection: L-Plug or M12 x 1
- Power rating: 250V AC / 4A、24V DC / 3A

- 开关范围 : 0,2 ... 16 bar
- 速动微动开关
- 弹性体膜片
- 开关类型为单刀双掷
- 电气连接 : L-Plug 插头或 M12 × 1
- 额定功率 : 250V AC / 4A、24V DC / 内螺纹 A

Drawing / 尺寸图

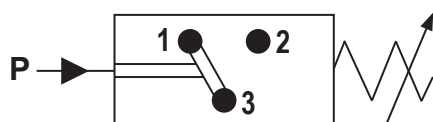


Standard types / 标准类型

Series 系列	Adjustment ranges 开关范围	Max. system pressure 最大系统压力	Repeatability 重复性	Max. hysteresis 最大滞后	Measurement element 测量元件	Pressure fitting 过程连接	Material of membrane 膜片材质	Material of housing 本体材质
8730	0,2 ... 2 bar	60 bar	± 0,04 bar	10%	Membrane 膜片	G1/4" female Falnge R1/4" female	NBR NBR-LowTemp. EPDM FVMQ Viton	Zinc plated steel / 镀锌钢 stainless steel / 不锈钢
8730	0,5 ... 8 bar		± 0,16 bar					
8730	1 ... 16 bar		± 0,32 bar					

Technical Specification / 技术规范				
Adjustment range 开关范围	0,2 ... 2	0,5 ... 8	1 ... 16	[bar]
Repeatability 重复性	± 0,04	± 0,16	± 0,32	[bar]
Max. system pressure 最大系统压力	60			[bar]
Max. hysteresis 最大滞后	0,1 bar + 5 ... 10%, not adjustable 0,1 bar + 5 ... 10%, 不可调			
Switched voltage 开关电压	AC: ~ 250 / DC: ~ 24			[V]
max. switched current resistive load 最大开关电阻负载电流	AC: 6 / DC: 3			[A]
Mechanical lifetime 机械寿命	> 5 × 10 ⁶ / cycles			
Switching frequency 开关频率	max. 100 cycles / min 最高 100 次 / 分钟			
Material of housing 本体材质	zinc plated steel / stainless steel 镀锌钢 / 不锈钢			
Material of membrane 膜片材质	NBR / NBR-LowTemp. / EPDM / FVMQ / Viton			
Pressure fitting 过程连接	G1/4" female / horizontal flange / R1/4" female fixed			
Tightening torque, recommended 拧紧扭矩, 推荐	20			[Nm]
Vibration resistance 抗振动性	10g (10 ... 2000Hz) sinus acc. to ISO 16750-3 10g 符合 ISO 16750-3 在 10 .. 2000 Hz			
Shock resistance 抗冲击性	30g, 14ms shaped sinus acc. to DIN 40046, T7 30g, 14ms 符合 DIN 40046, T7			
Temperature range of medium 介质温度范围	NBR : -20 ... +80 NBR-LowTemp.: -40 ... +80 EPDM: -40 ... +100 FVMQ: -40 ... +100 Viton: 0 ... +100			[°C]
Protection degree 防护等级	IP65 using L-Plug / L-Plug 插头为 IP65 IP67 using plug M12x1 / M12 × 1 为 IP67			
Weight 重量	~ 0,3			[kg]

Wiring diagram / 接线图



SPDT / 单刀双掷

Series 8730 / 8730 系列

Pressure Switch / 压力开关

Specification key / 规格代码

8730 - - - - - - -

Pressure adjustment range / 压力设置范围	
73	0,2 ... 2 bar
44	0,5 ... 8 bar
78	1 ... 16 bar

Output signal / 输出信号	
3	SPDT / 单刀双掷

Membrane / 膜片材质		
N	NBR	-20 ... +80°C
L	NBR-LowTemp.	-40 ... +80°C
E	EPDM	-40 ... +100°C
F	FVMQ	-40 ... +100°C
V	Viton	0 ... +100°C

Material of housing / 本体材质	
Z	zinc plated steel / 镀锌钢
S	stainless steel / 不锈钢

Options / 选项	
W	without / 无
XX,XX	Factory preset / 工厂预设开关点 ¹⁾

¹⁾ set point adjustment increasing or decreasing.
¹⁾ 设置开关点为上升或下降压力。

E-connection / 电气连接	
51	L-Plug EN 175301-803-A / L-Plug 插头
64	M12 x 1 / 圆形 M12 x 1

Pressure fitting / 过程连接	
62	G1/4" female
74	horizontal flange
46	R1/4" female fixed

Sample:

8730-44-3-N-Z-62-51-4,0F

Pressure Switch
Type: 8730
Adjustment range: 0,5 ... 8 bar
Output signal: SPDT
Membrane: NBR
Material of housing: zinc plated steel
Pressure fitting: G1/4" female
E-connection: L-Plug acc. to DIN EN 175301-803
Option: Factory preset switch SP=4,0 bar falling

举例:

8730-44-3-N-Z-62-51-4,0F

压力开关
型号: 8730
压力设置范围: 0,5 ... 8 bar
输出信号: SPDT
膜片材质: NBR
本体材质: 镀锌钢
压力接头: G1/4" 内螺纹
电气连接: L-Plug 插头
选项: 工厂预设开关, 开关点 =4,0 bar 下降