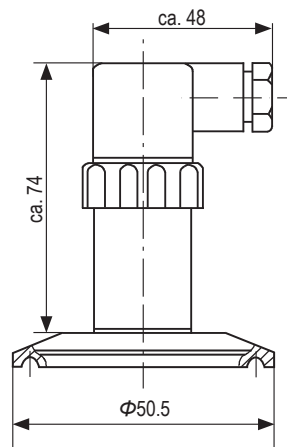




Pressure Transmitter 压力变送器

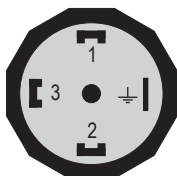
- Measuring ranges from 0 ... 0,25 bar to 0 ... 25 bar
 - Output signal: 4 ... 20 mA or 0 ... 10 V
 - Aseptic pressure connection
 - E-connection: L-Plug, M12×1 or cable outlet
 - Optimum long-term stability
 - High overload capacity
- 测量范围从 0 ... 0,25 bar 到 0 ... 25 bar
 - 输出信号: 4 ... 20 mA 或 0 ... 10 V
 - 无菌压力连接
 - 电气连接: L-Plug 插头, M12×1 插头或电缆输出
 - 最佳长期稳定性
 - 高过载保护

Drawing / 尺寸图



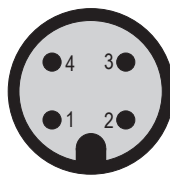
Wiring diagram / 接线图

L-Plug



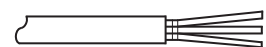
Pin / 针	4 ... 20 mA	0 ... 10 V
1	U _b +	U _b +
2	S+	0 V / S-
3	---	S+
⊥	---	---

M12 × 1



Pin / 针	4 ... 20 mA	0 ... 10 V
1	U _b +	U _b +
2	---	---
3	S+	0 V / S-
4	---	S+

Cable outlet / 电缆出线



Cable / 线缆	4 ... 20 mA	0 ... 10 V
red / 红	U _b +	U _b +
black / 黑	---	0 V / S-
yellow / 黄	S+	S+
white / 白	---	---

Technical Specification / 技术规范							
Pressure range 测量范围	0 ... 0,25	0...0,4	0...0,6	0 ... 1	0 ... 1,6	0 ... 2,5	[bar]
Overload limit 过载极限	≤ 2	≤ 2	≤ 4	≤ 5	≤ 5	≤ 10	[bar]
Pressure range 测量范围	0 ... 4	0 ... 6	0 ... 10	0 ... 16	0 ... 20	0 ... 25	[bar]
Overload limit 过载极限	≤ 20	≤ 35	≤ 50	≤ 80	≤ 80	≤ 80	[bar]
Measuring principle 测量原理	piezoresistive / 压阻						
Supply voltage 供电电压	8 ... 36						[V DC]
Output signal 输出信号	4 ... 20 mA, 2-wires or 0 ... 10 V, 3-wires 4 ... 20 mA, 2 线制或 0 ... 10 V, 3 线制						
Permitted load 允许载荷	4 ... 20 mA: ≤ (U _b -8V)/0.02A 0 ... 10 V: > 10KΩ						
Current consumption 电流消耗	4 ... 20 mA: ≤ 25 mA 0 ... 10 V: 8 mA						[mA]
Accuracy 精度	≤ ± 0.5、≤ ± 0.25						[%]
Repeat accuracy 重复精度	≤ ± 0.075						[% F.S.]
Compensated temperature range 补偿温度范围	0 ... 70						[°C]
Temperature error zero point 零点温度误差	≤ ± 0.03						[% F.S./K]
Temperature error range 量程温度误差	≤ ± 0.03						[% F.S./K]
Operating temperature 工作温度	-30 ... +125						[°C]
Storage temperature 储存温度	-30 ... +125						[°C]
Ambient temperature 环境温度	-25 ... +85						[°C]
Response time 响应时间	≤ 1						[ms]
Vibration resistance 抗振动性	10g (4 ... 500Hz) sinus acc. to DIN EN 60068-2-6 10g 符合 DIN EN 60068-2-6 在 4 .. 500 Hz						
Shock resistance 抗冲击性	100 g; 11 ms; DIN EN 60068-2-27 100g, 11 ms 符合 DIN EN 60068-2-27						
Housing 外壳材质	Stainless Steel 316L / 不锈钢 316L						
Wetted parts 接触部件	Stainless Steel 316L / 不锈钢 316L						
Service life 使用寿命	> 100 million cycles / > 1 亿次循环						
Fitting thread 过程连接	Tri-clamp 1 ½" (others on request) / 1 ½" 卡箍 (其他按要求提供)						
Electrical connection 电气连接	L-Plug、M12×1 or cable outlet L-Plug 插头、M12×1 插头或电缆出线						
Reverse polarity and short circuit protection 反极性和短路保护	Yes / 带						
Protection degree 防护等级	IP65 using L-Plug / L-Plug 插头为 IP65 IP67 using M12×1 or cable outlet/ M12×1 插头或电缆出线为 IP67						

Specification key / 规格代码

8325 - - - - - - -

Measuring range / 测量范围	
68	0 ... 0,25 bar
69	0 ... 0,4 bar
70	0 ... 0,6 bar
71	0 ... 1 bar
72	0 ... 1,6 bar
74	0 ... 2,5 bar
75	0 ... 4 bar
76	0 ... 6 bar
77	0 ... 10 bar
78	0 ... 16 bar
79	0 ... 20 bar
80	0 ... 25 bar

Accuracy / 精度等级	
25	0,5%
22	0,25%

Options / 选项	
W	without / 无
B	2 m
E	5 m
K	10 m

E-connection / 电气连接	
51	L-Plug EN 175301-803-A / L-Plug 插头
64	M12 ×1 / M12 ×1 插头
71	Cable outlet / 电缆出线

Pressure fitting / 过程连接	
83	Tri-clamp 1 ½"

Output signal / 输出信号	
19	4 ... 20 mA
17	0 ... 10 V

Sample:

8325-76-25-19-83-51-W

Pressure Transmitter
Type: 8325
Measuring range: 0 ... 6 bar
Accuracy: 0,5%
Output signal: 4 ... 20 mA, 2-wires
Power supply: 8 ... 36V DC
Material of housing: stainless steel 316L
Operating temperature: -30 ... +125°C
Pressure fitting: Tri-clamp 1 ½"
E-connection: L-Plug acc. to DIN EN 175301-803
Protection type: IP65

举例:

8325-76-25-19-83-51-W

压力变送器
型号: 8325
测量范围: 0 ... 6 bar
精度等级: 0,5%
输出信号: 4 ... 20 mA, 2 线制
供电电压: 8 ... 36V DC
本体材质: 不锈钢 316L
介质温度: -30 ... +125°C
过程连接: 1 ½" 卡箍
电气连接: L-Plug 插头
防护等级: IP65